

CRACKER BARREL OF WEST JENSEN, A P.U.D./D.R.I.

Plat Book 16 Page 69

BEING A REPLAT OF A PORTION OF LOT 1, BLOCK 3, AS SHOWN ON PLAT NO. 1, ST. LUCIE GARDENS,
AS RECORDED IN PLAT BOOK 1, PAGES 35, ST. LUCIE (NOW MARTIN) COUNTY, FLORIDA, PUBLIC RECORDS.
ALL LYING IN A PORTION OF SECTION 18, TOWNSHIP 37 SOUTH, RANGE 41 EAST, MARTIN COUNTY, FLORIDA.

PRESERVATION TRACT NO. 3
JENSEN BEACH COUNTRY CLUB
CLUB PLAT NO. 10
PLAT BOOK 16, PAGE 40
MARTIN COUNTY, FLORIDA

CONSERVATION EASEMENT
PARCEL NO. 9
O.R.B. 1313, PAGE 1252

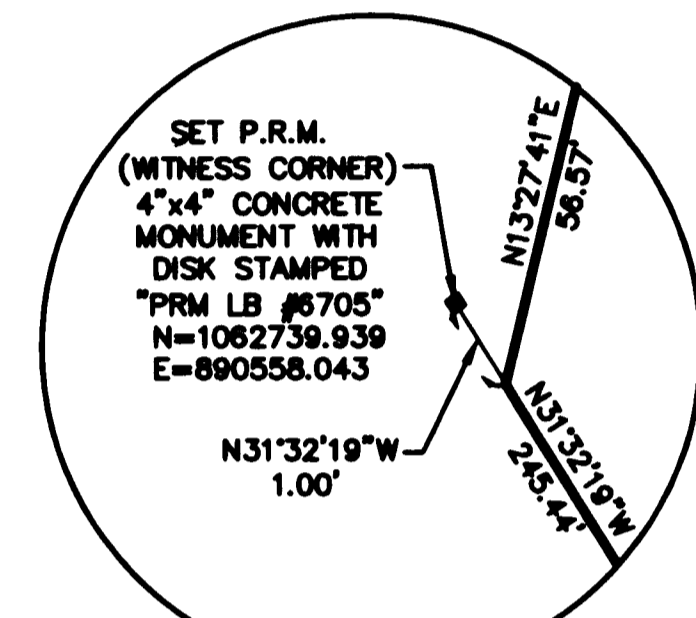
NORTH LINE OF LOT 7, BLOCK 4
PLAT BOOK 1, PAGE 35

CINNAMON TREE
PLAT BOOK 8, PAGE 73
ST. LUCIE (NOW MARTIN) COUNTY, FLORIDA

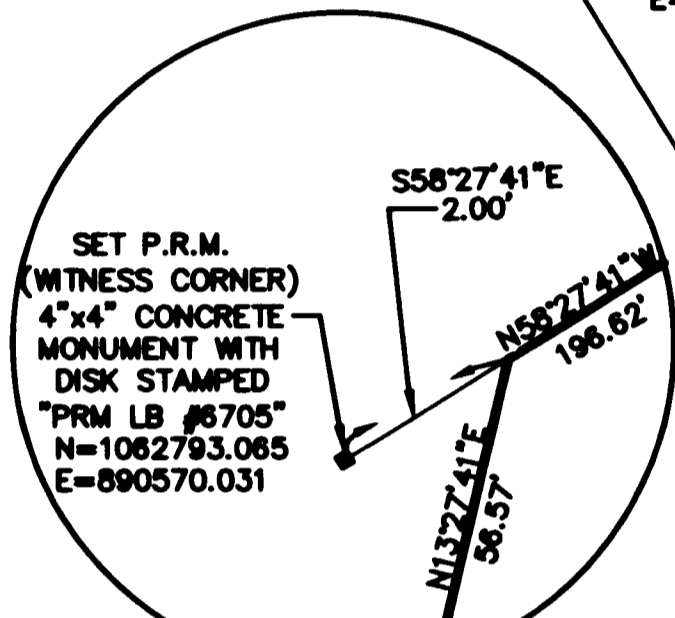
GRAPHIC SCALE



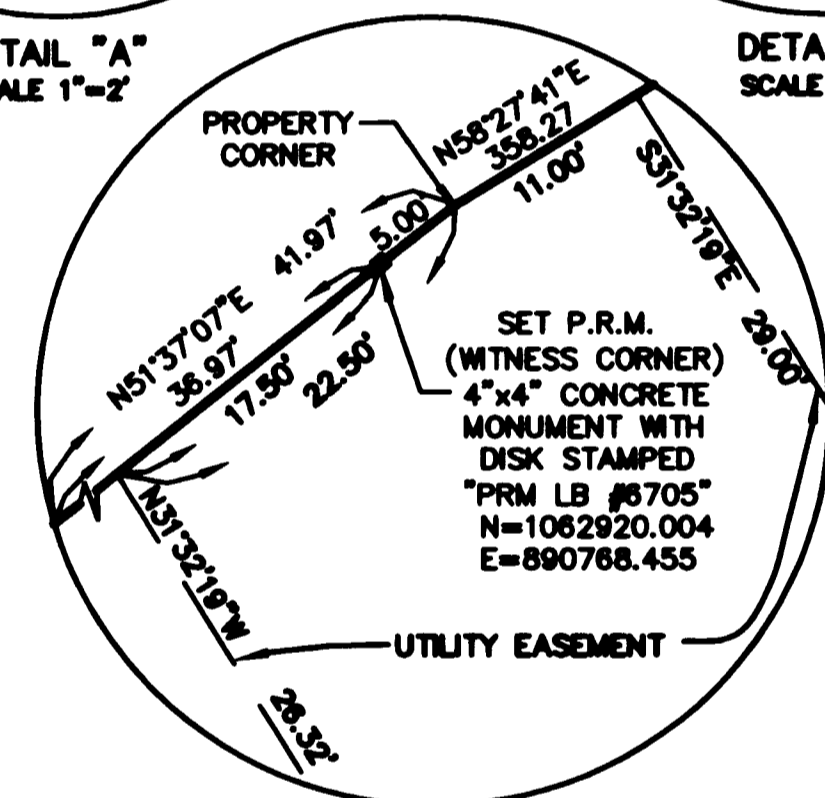
(IN FEET)
1 inch = 40 ft.



DETAIL "A"
SCALE 1"=2'



DETAIL "B"
SCALE 1"=2'



DETAIL "C"
SCALE 1"=10'

SURVEYOR'S NOTES:

1. THIS PLAT, AS RECORDED IN ITS ORIGINAL FORM IN THE PUBLIC RECORDS, IS THE OFFICIAL DEPICTION OF THE SUBDIVIDED LANDS DESCRIBED HEREON AND WILL IN NO CIRCUMSTANCES BE SUPPLANTED IN AUTHORITY BY ANY OTHER FORM OF THE PLAT, WHETHER GRAPHIC OR DIGITAL.
2. THERE MAY BE ADDITIONAL RESTRICTIONS THAT ARE NOT RECORDED ON THIS PLAT THAT MAY BE FOUND IN THE PUBLIC RECORDS OF THIS COUNTY.
3. THE COORDINATES AND BEARINGS SHOWN HEREON REFER TO THE FLORIDA STATE PLANE COORDINATE SYSTEM, TRANSVERSE MERCATOR PROJECTION, EAST ZONE, NORTH AMERICAN DATUM OF 1983 (NAD83 / 90 ADJUSTMENT) AND ARE BASED UPON THE FOLLOWING MONUMENTS:

"F017"
THE STATION IS LOCATED IN MARTIN COUNTY, FLORIDA IN THE MEDIAN OF U.S. HIGHWAY NO. 1, AT THE COUNTY LINE. THIS STATION LIES 204' SOUTH OF THE BULLNOSE, 7' EAST OF THE EDGE OF PAVEMENT OF THE SOUTHBOUND LANE, AND 1.5' NORTH OF A WITNESS POST.
N = 1,085,586.863
E = 898,108.453

"GCY D21"
THE STATION IS LOCATED IN MARTIN COUNTY, FLORIDA ON STATE ROAD 5, U.S. HIGHWAY NO. 1. TO REACH THE STATION FROM JENSEN BEACH BOULEVARD AND U.S. HIGHWAY NO. 1, GO SOUTH ON U.S. HIGHWAY NO. 1 FOR 1.1 MILES, THE STATION IS LOCATED 8.3' EAST OF THE EAST EDGE OF PAVEMENT, 51' NORTH OF TWO CULVERTS.
N = 1,053,539.090
E = 894,581.203

THE BEARINGS SHOWN HEREON ARE GRID BEARINGS BASED UPON THE MONUMENTS DESCRIBED ABOVE. THE BEARING BASE IS NORTH 25°37'04" WEST.

4. THERE SHALL BE NO BUILDING OR ANY KIND OF CONSTRUCTION OR TREES OR SHRUBS PLACED ON DRAINAGE EASEMENTS.
5. THERE SHALL BE NO BUILDING OR ANY PERMANENT STRUCTURES PLACED ON UTILITY EASEMENTS.
6. THE LANDS BOUND BY THIS SURVEY ARE LOCATED IN FLOOD ZONE "X" (AREAS OF 500-YEAR FLOOD; AREAS OF 100-YEAR FLOOD WITH AVERAGE DEPTHS OF LESS THAN 1 FOOT OR WITH DRAINAGE AREAS LESS THAN 1 SQUARE MILE; AND AREAS PROTECTED BY LEVEES FROM 100-YEAR FLOOD) PER F.E.M.A. FLOOD INSURANCE RATE MAP NUMBER 12085C0020F, EFFECTIVE DATE OF OCTOBER 4, 2002.

THIS DOCUMENT, TOGETHER WITH THE CONCEPTS AND DESIGN PRESENTED HEREON, AS AN INSTRUMENT OF SERVICE, IS INTENDED ONLY FOR THE SPECIFIC PURPOSE AND CLIENT FOR WHICH IT WAS PREPARED. BEFORE OF AND WITHOUT RELIANCE ON THIS DOCUMENT WITHOUT AUTHORIZATION AND ADOPTION BY CREECH ENGINEERS, INC. SHALL BE WITHOUT LIABILITY TO CREECH ENGINEERS, INC.

JENSEN BEACH
LAND COMPANY LTD
O.R.B. 1344, PAGE 2425
TOWN CENTRE SHOPPES
NOT PLATTED

PLAT NO. 1, ST. LUCIE GARDENS
LOT BLOCK 3
PLAT BOOK 1, PAGE 35
ST. LUCIE (NOW MARTIN) COUNTY, FLORIDA

JENSEN BEACH
LAND COMPANY LTD
O.R.B. 841, PAGE 1231
NOT PLATTED

POINT OF COMMENCEMENT
THE INTERSECTION OF THE SOUTH LINE OF SECTION 18
AND THE CENTERLINE OF THE 200 FOOT WIDE
RIGHT-OF-WAY OF U.S. HIGHWAY NO. 1 (STATE ROAD NO. 5)
ACCORDING TO FLORIDA DEPARTMENT OF TRANSPORTATION
RIGHT-OF-WAY MAP, SECTION 8801-(111)205.

SOUTH LINE OF SECTION 18,
TOWNSHIP 37 SOUTH, RANGE 41 EAST

CREECH

ENGINEERS, INC.

CIVILIZATION ENGINEERED

2000 N.E. JENSEN BEACH BLVD., FLORIDA 34857 (772) 283-1413
4450 WEST EAU GALLE BLVD., MELBOURNE, FL 32934 (321) 255-5434
707 EAST PARK AVENUE, TALLAHASSEE, FL 32301 (850) 841-1705

MEMBER OF PROFESSIONAL ENGINEERS SOCIETY OF FLORIDA AND SOCIETY OF PROFESSIONAL SURVEYORS OF FLORIDA

LEGEND

- (D) DEED DATA
- (GRID) GRID BEARING
- LB LICENSED BUSINESS
- CL CENTER LINE
- P.R.M. PERMANENT REFERENCE MONUMENT
- SET PERMANENT REFERENCE MONUMENT
4"x4" CONCRETE MONUMENT
WITH DISK STAMPED "PRM-LB 6705"
- FOUND 4"x4" CONCRETE MONUMENT, NO I.D.
- I.D. IDENTIFICATION
- O.R.B. OFFICIAL RECORDS BOOK
- N= NORTHING
- E= EASTING
- U.E. UTILITY EASEMENT
- PVC POLYVINYL CHLORIDE